

ASSEMBLY INSTRUCTIONS AND RECOMMENDED FORMATS PER SHELF PROPOSAL





Recommended formats per shelf proposal

First shelf



Formats 750ml.



Formats 400ml.



Formats 250ml.-240ml.



Formats 125ml.



Formats 12 ml.



Second shelf



Formats 750 ml.



Formats 400 ml.



Formats 300ml.

Third shelf



Formats 1250 ml.



Formats 1000ml.



Formats 750ml.

Fourth shelf



Formats 3000ml.

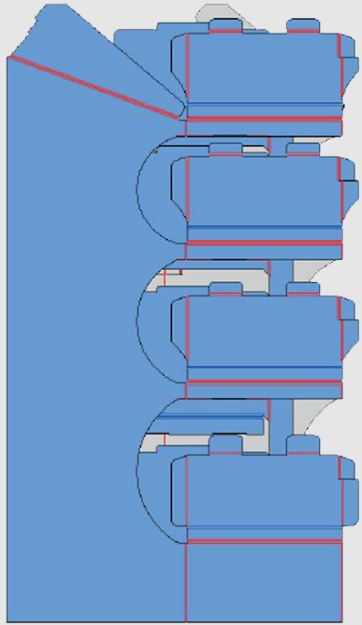


Formats 2000ml.



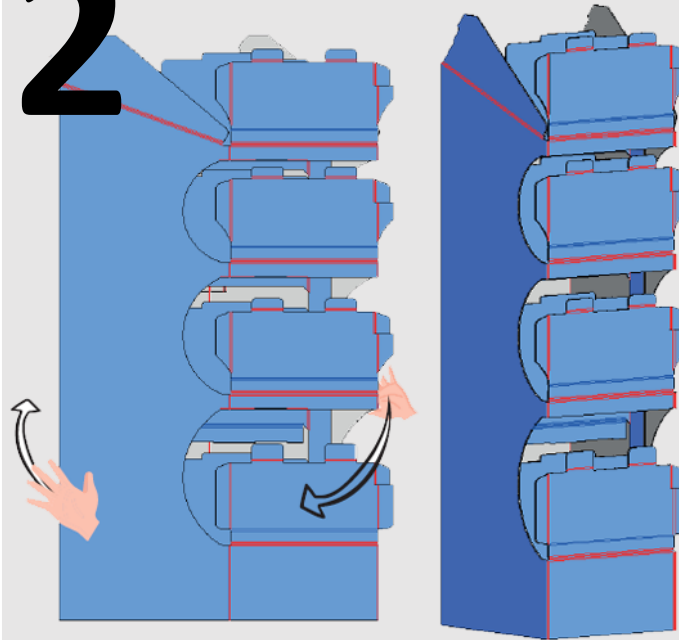
Assembly instructions

1



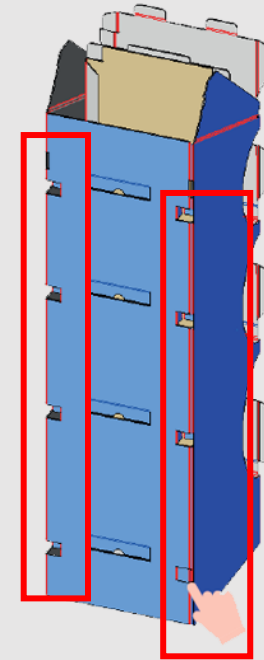
The display unit is delivered flat.

2



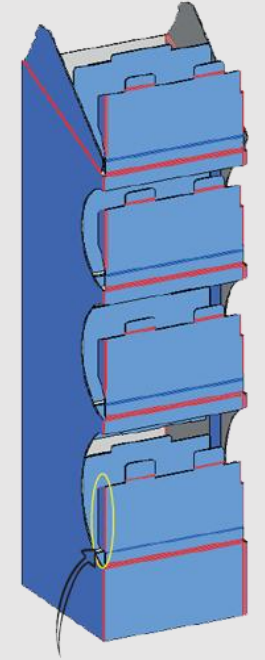
Place your hands on both ends and twist to move the display unit into position 2.

3



At the back, there are 8 closed corner pieces. Push each one inwards, one at a time, until all form a 90° angle pointing inwards.

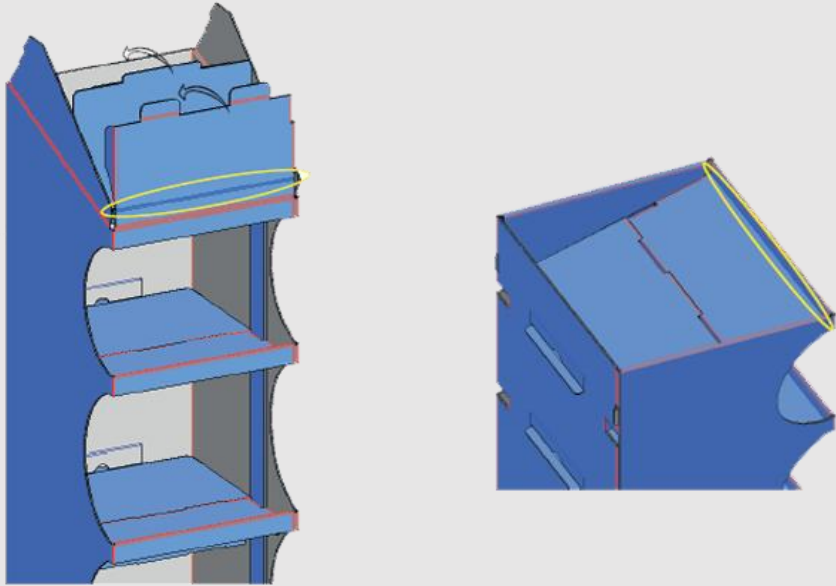
4



Fold the shelf flaps 90° to prepare for assembly.

Assembly instructions

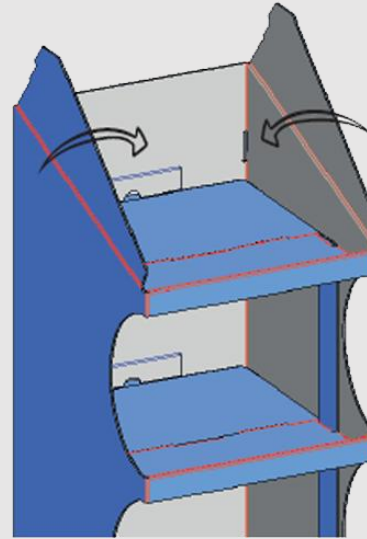
5



To assemble the shelves, fold the red creases 90°, except for the blue one, which should be folded -90°, until they reach their final position. Start by assembling the back shelf, then move on to the front shelf.

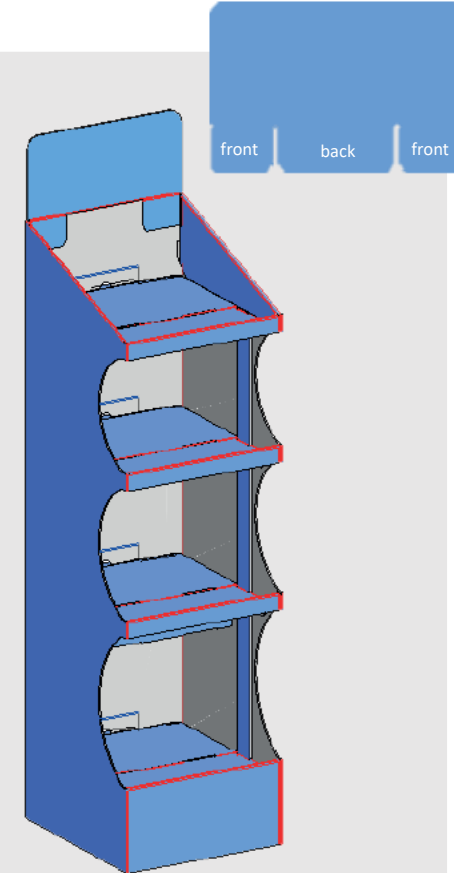
This figure shows the position of the blue crease (folded to -90°) once the shelf is assembled. It acts as a stopper to keep products securely on the shelf and prevent them from slipping.

6



Fold the top double crease 90° to lock it in place.

7



Attach the cardboard piece (small parts in front) and you're done.